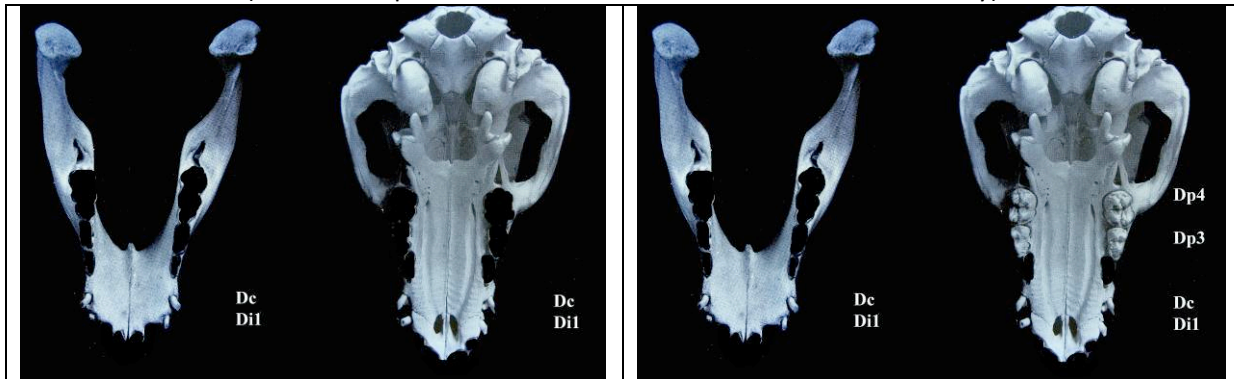


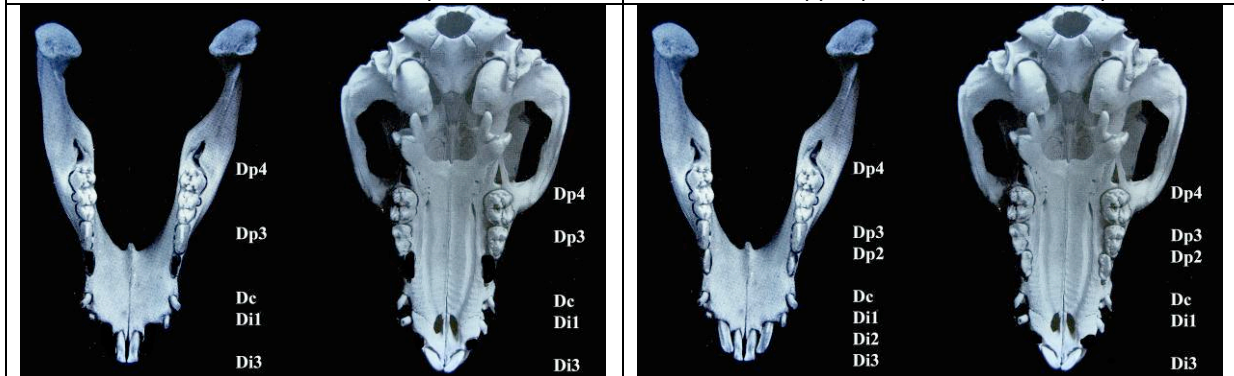
Aging piglets, weaners and growers by their teeth

(the non erupted teeth have been blacked out to create clarity)



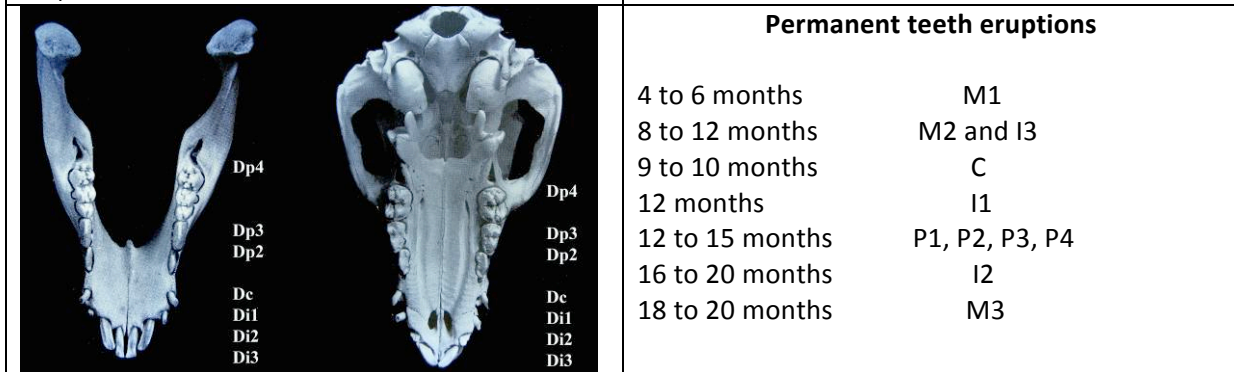
Birth – the incisors 3 and canines are present

1 week – the upper premolars 3 and 4 erupt



2 to 4 weeks: lower premolars 3 and 4 and incisors 1 erupt

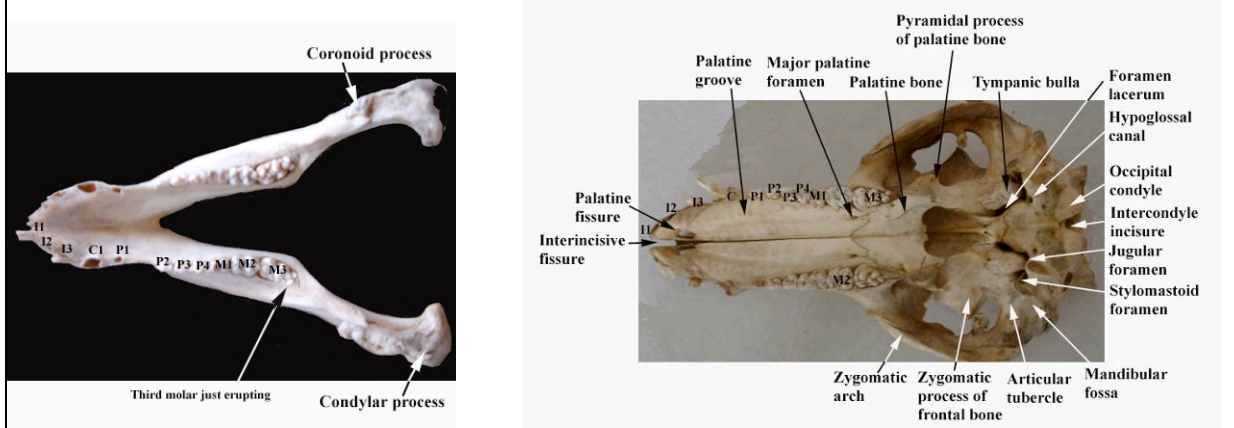
5 to 7 weeks: Premolars 2 and lower incisors 2 erupt



6 to 12 weeks upper incisors 2 erupt

Permanent teeth eruptions

- 4 to 6 months M1
- 8 to 12 months M2 and I3
- 9 to 10 months C
- 12 months I1
- 12 to 15 months P1, P2, P3, P4
- 16 to 20 months I2
- 18 to 20 months M3



Adult lower and upper jaw with teeth labeled